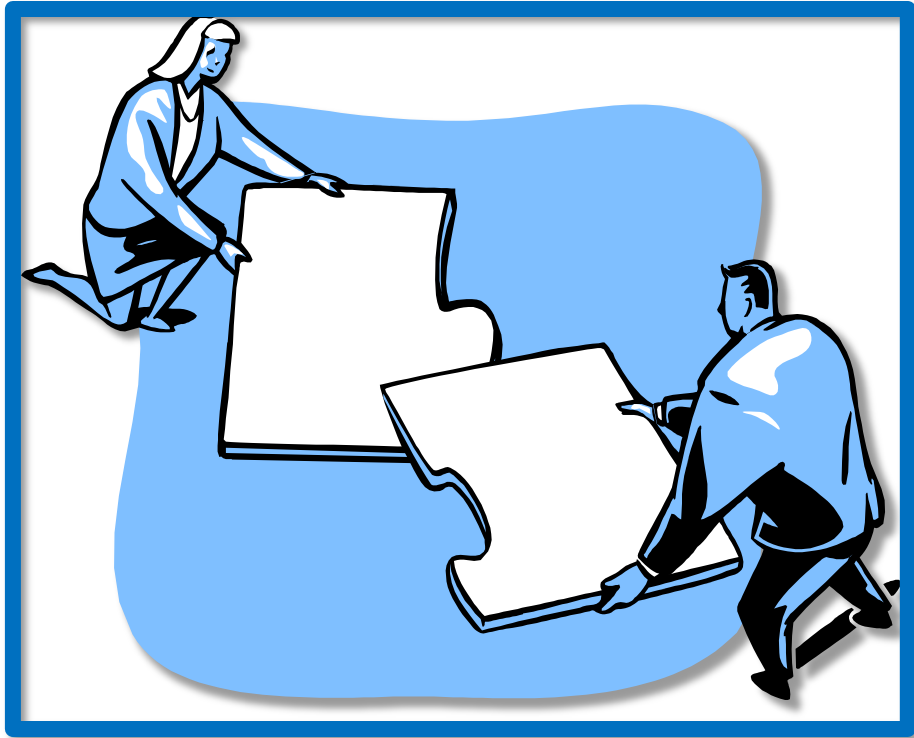


CALCULATING WAGES & INCOME



Personal Finance: Piecework

The more pieces you finish, the more you get paid.



Lesson Objective

Students will learn how to calculate an income based on piecework.



Piecework

Piecework is work in which you are paid for each “piece” of work that you do.

For example, these workers get paid by:

- Field worker– Apples Picked
- Contractor– Windows Installed
- Doctor– Shots Given
- Dentist– Teeth Pulled
- Artist– Sculptures Sold
- Others?



Calculating Piecework

To calculate piecework, use this equation:

$$\text{Pieces Completed} \times \text{Rate per Piece} = \text{Income}$$



Calculating Piecework

Anthony works in a clothes factory. He gets paid \$0.78 for each sleeve that he sews onto a shirt. Using the chart, what will his income be?

Pieces Finished:	M	T	W	TH	FR
	49	57	63	42	54

Pay is \$0.78 per piece



Calculating Piecework

Anthony works in a clothes factory. He gets paid \$0.78 for each sleeve that he sews onto a shirt. Using the chart, what will his income be?

Pieces Finished:	M	T	W	TH	FR
	<u>49</u>	<u>57</u>	<u>63</u>	<u>42</u>	<u>54</u>

Pay is \$0.78 per piece

Step 1

49 M
57 T
63 W
42 TH
+ 54 F

265 Total Pieces Sewn



Calculating Piecework

Anthony works in a clothes factory. He gets paid \$0.78 for each sleeve that he sews onto a shirt. Using the chart, what will his income be?

Pieces Finished:	M	T	W	TH	FR
	49	57	63	42	54

Pay is \$0.78 per piece

<u>Step 1</u>	49	M	<u>Step 2</u>	265	Total Pieces
	57	T		\$ 0.78	\$ per piece
	63	W		<u>2120</u>	
	42	TH		<u>18550</u>	
	+ 54	F		\$ 206.70	Wages
	<u>265</u>	Total Pieces Sewn			



Practice

Celia works in a watch factory. She gets paid \$0.30 for each watch face she puts in place. Using the chart, what will her income be?

Pieces Finished:	M	T	W	TH	FR
	100	92	55	125	95

Pay is \$0.30 per piece



Practice

Celia works in a watch factory. She gets paid \$0.30 for each watch face she puts in place. Using the chart, what will her income be?

Pieces Finished:	M	T	W	TH	FR
	100	92	55	125	95

Pay is \$0.30 per piece

<u>Step 1</u>	100	M	<u>Step 2</u>	467	Total Pieces
	92	T		\$ 0.30	\$ per piece
	55	W		<u>\$140.10</u>	Wages
	125	TH			
	+ 95	F			
	<hr/>				
	467	Total Pieces Sewn			



Review:

1. What is piecework?
2. What is the equation for piecework?
3. If you are paid \$1.50 for each box you make in the cabinet factory, how much would your income be if you made 500 boxes?



Review:

1. What is piecework?

Work in which you are paid for each “piece” of work that you do.

2. What is the equation for piecework?

$\text{Pieces Completed} \times \text{Rate per Piece} = \text{Income}$

3. If you are paid \$1.50 for each box you make in the cabinet factory, how much would your income be if you made 500 boxes?

\$750.00